

**Reed-Custer Primary School**  
**Reed Custer CUSD 255U**  
**Custer Park, ILLINOIS**



**ILLINOIS**  
**SCHOOL**  
**REPORT**  
**CARD**

**GRADES : PK K 1**

State and federal laws require public school districts to release report cards to the public each year.

Starting in 2009, charter school information is included in district statistics.

**STUDENTS**

RACIAL/ETHNIC BACKGROUND AND OTHER INFORMATION															
	White	Black	Hispanic	Asian	Native Hawaiian /Pacific Islander	American Indian	Two or More Races	Percent Low-Income	Percent Limited-English-Proficient	Percent IEP	High Sch. Dropout Rate	Chronic Truancy Rate	Mobility Rate	Attendance Rate	Total Enrollment
School	90.6	0.3	3.7	1.7	0.0	0.3	3.4	23.9	0.0	21.9		1.3	19.9	94.1	297
District	93.1	0.8	3.3	0.4	0.1	0.1	2.3	32.6	0.0	15.5		1.4	8.3	94.2	1,766
State	51.4	18.3	23.0	4.1	0.1	0.3	2.8	48.1	8.8	14.0		3.2	12.8	94.0	2,074,806

**Low-income** students come from families receiving public aid; live in institutions for neglected or delinquent children; are supported in foster homes with public funds; or are eligible to receive free or reduced-price lunches.  
 IEP Students are those students eligible to receive special education services.

**Limited-English-proficient** students are those students eligible for transitional bilingual programs.

**Mobility rate** is based on the number of times students enroll in or leave a school during the school year.

**Chronic truants** are students who are absent from school without valid cause for 18 or more of the last 180 school days.

**Total Enrollment** is based on [Home School](#).

**INSTRUCTIONAL SETTING**

PARENTAL CONTACT*		STUDENT-TO-STAFF RATIOS			
	Percent	Pupil-Teacher Elementary	Pupil-Teacher Secondary	Pupil-Certified Staff	Pupil-Administrator
School	100.0	--	--	--	--
District	100.0	18.4	15.5	13.0	176.6
State	96.0	18.8	18.9	13.6	211.3

\* Parental contact includes parent-teacher conferences, parental visits to school, school visits to home, telephone conversations, and written correspondence.

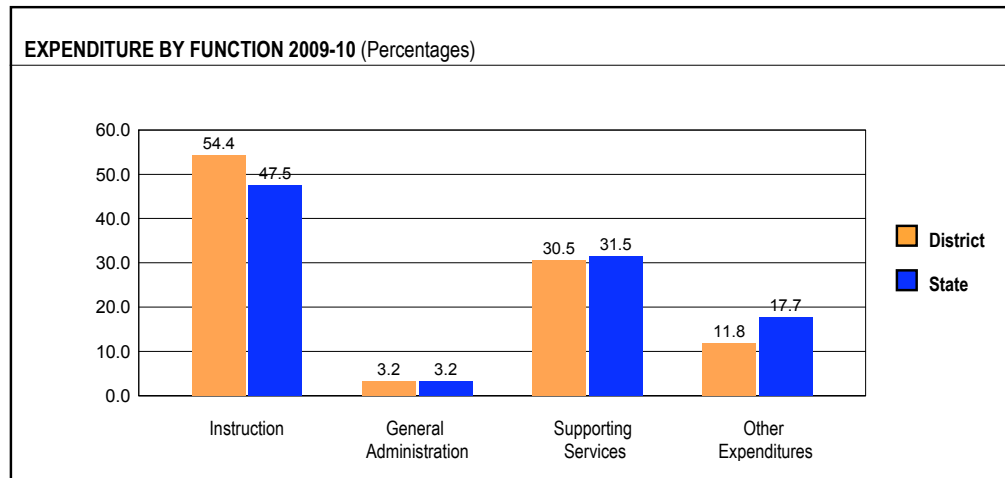
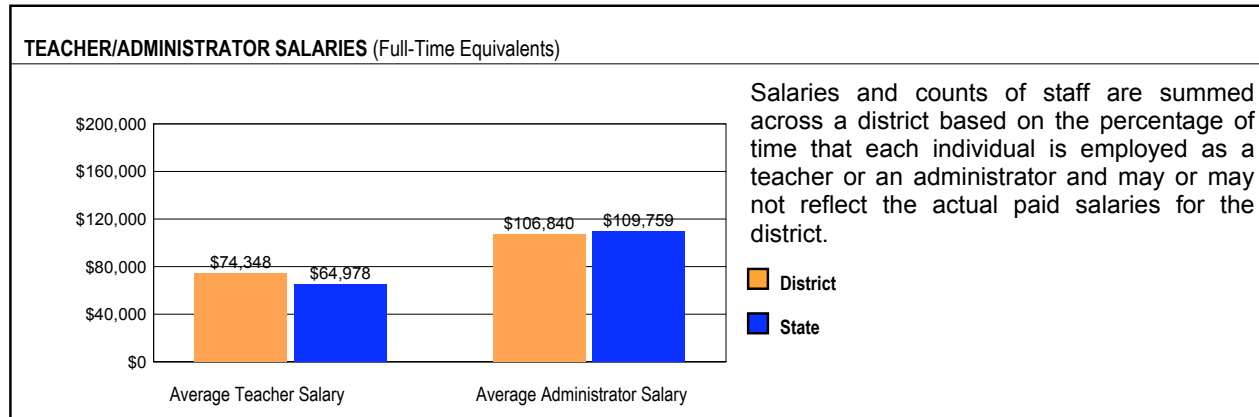
AVERAGE CLASS SIZE (as of the first school day in May)										
Grades	K	1	2	3	4	5	6	7	8	9 - 12
School	19.8	20.5								
District	19.8	20.5								
State	20.9	21.6								

TEACHER INFORMATION (Full-Time Equivalents)											
	White	Black	Hispanic	Asian	Native Hawaiian /Pacific Islander	American Indian	Two or More Races	Unknown	Male	Female	Total Number
District	100.0	0.0	0.0	0.0	0.0	0.0	0.0	0.0	27.1	72.9	114
State	82.4	6.1	5.0	1.2	0.1	0.1	0.7	4.3	23.1	76.9	128,262

TEACHER INFORMATION ( Continued )					
	Average Teaching Experience (Years)	% of Teachers with Bachelor's Degrees	% of Teachers with Master's & Above	% of Teachers with Emergency or Provisional Credentials	% of Classes Not Taught by Highly Qualified Teachers
School	--	--	--	0.0	0.0
District	18.1	17.9	82.1	0.0	0.0
State	13.2	39.5	60.4	0.6	0.8

Some teacher/administrator data are not collected at the school level.

## SCHOOL DISTRICT FINANCES



REVENUE BY SOURCE 2009-10				EXPENDITURE BY FUND 2009-10			
	District	District %	State %		District	District %	State %
Local Property Taxes	\$19,261,179	83.9	58.9	Education	\$17,843,678	81.9	72.9
Other Local Funding	\$894,715	3.9	6.4	Operations & Maintenance	\$2,357,123	10.8	6.0
General State Aid	\$540,098	2.4	14.9	Transportation	\$903,397	4.1	3.8
Other State Funding	\$1,326,884	5.8	7.5	Debt Service	\$0	0.0	7.2
Federal Funding	\$944,300	4.1	12.4	Tort	\$124,085	0.6	1.2
TOTAL	\$22,967,176			Municipal Retirement/ Social Security	\$451,938	2.1	1.9
				Fire Prevention & Safety	\$0	0.0	0.7
				Site & Construction/ Capital Improvement	\$103,166	0.5	6.4
				TOTAL	\$21,783,387		

OTHER FINANCIAL INDICATORS				
	2008 Equalized Assessed Valuation per Pupil	2008 Total School Tax Rate per \$100	2009-10 Instructional Expenditure per Pupil	2009-10 Operating Expenditure per Pupil
District	\$339,049	3.13	\$7,618	\$12,030
State	**	**	\$6,773	\$11,537

\*\* Due to the way Illinois school districts are configured, state averages for equalized assessed valuation per pupil and total school tax rate per \$100 are not provided.

**Equalized assessed valuation** includes all computed property values upon which a district's local tax rate is calculated.

**Total school tax rate** is a district's total tax rate as it appears on local property tax bills.

**Instructional expenditure per pupil** includes the direct costs of teaching pupils or the interaction between teachers and pupils.

**Operating expenditure per pupil** includes the gross operating cost of a school district excluding summer school, adult education, bond principal retired, and capital expenditures.